

Devon Square



Elegant Apartment Homes

Devon Square

Devon Square



A private, gated community of distinguished apartment homes. Devon Square combines carefree apartment living with the design features and charm of a custom home.

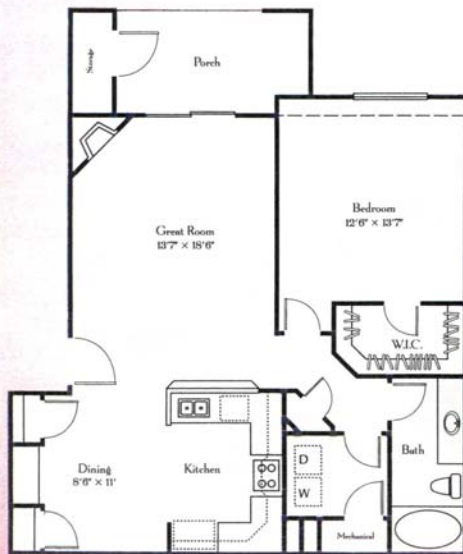
The community offers two- and three-story buildings, each containing spacious one- and two-bedroom apartment homes and executive town homes with attached garages. Each home contains oversized floor plans with luxurious floor coverings, high ceilings, gourmet kitchen, a bright and cheerful atmosphere, and creative modern designs. Ample parking, including reserved garages, lush landscaping, and mountain views surround these homes. The community clubhouse offers a lavish party room, business center, exercise facilities, Jacuzzi, and an enticing swimming pool with a waterfall.

Devon Square is conveniently located in southeast Denver near the intersection of Leetsdale and Mississippi, and other major thoroughfares to all of the best attractions that Denver has to offer. Devon

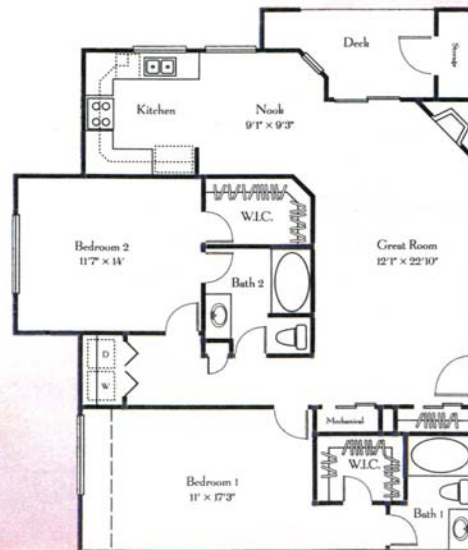
Square is equally close to the Denver Tech Center and downtown business hubs, the prestigious Cherry Creek Shopping District and Mall, and is situated in the renowned Cherry Creek School District. Denver International Airport, I-70, and I-25 are easily accessible via nearby highway I-225.

Devon Square is surrounded by fine restaurants, banks, shopping centers, art galleries, nightlife, parks, golf courses, health clubs, sports complexes, and Cherry Creek Reservoir, where you can experience a vast array of outdoor sports. The Highline Canal, a popular route for walking, running, inline skating, and cycling, passes within blocks of Devon Square.

Devon Square combines quality construction, innovative design, exceptional location, outstanding amenities, and carefree living in a beautiful environment to truly provide a feeling of exclusive country club living.

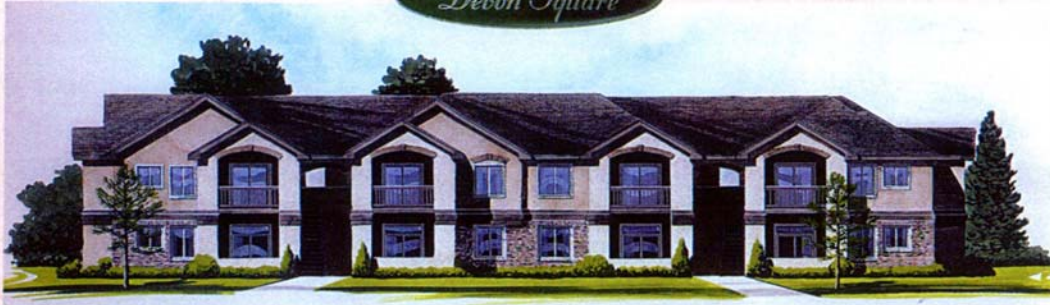


One Bedroom Floor Plan — 871 sq. ft.
Floor Plan to Dotted Line — 858 sq. ft.



Two Bedroom Floor Plan — 1,167 sq. ft.
Floor Plan to Dotted Line — 1,134 sq. ft.

Devon Square



Community Features

- Lavish clubhouse with party room/kitchen
- State of the art fitness center
- Business center
- Swimming pool with a waterfall
- Jacuzzi
- Gated entry
- Reserved garages
- Nearby Highline Canal recreational trails

Home Features

- Innovative and very spacious one- and two-bedroom floor plans
- Custom gas fireplaces
- Oak cabinetry
- Self-cleaning oven
- Large frost-free refrigerator with ice maker
- Dishwasher/garbage disposal
- Full-size microwave
- Vaulted/coffered ceilings
- Mini and vertical blinds
- Prewiring for intrusion alarm
- Large, insulated windows
- Quality floor coverings
- Cable TV hookup
- Walk-in closets
- High-speed internet wiring
- Washer/dryer hookups, rental units available
- Large private balcony/patio with large storage closet
- Six-panel doors and steel entry door
- Monitored fire detection/sprinkler system
- Deluxe "soaking tub" in every apartment
- Tiled entry and fireplace hearth
- Noise-buffering construction between all units and floors
- Individual hot water heater, furnace, and air conditioning

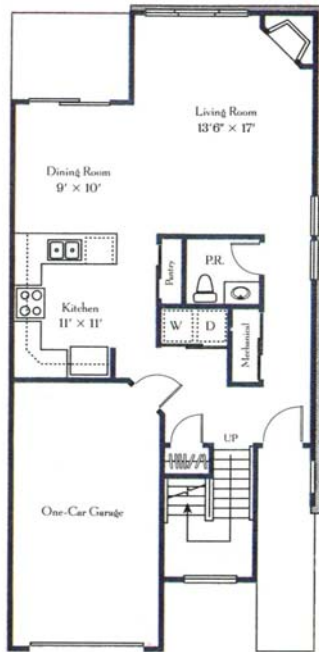


Clubhouse

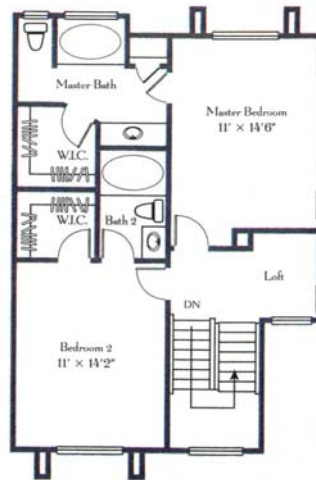




Executive Town Homes — 1,442 sq. ft.
Attached Garages



First Level



Second Level



1300 South Willow Street, Denver, Colorado 80247-2175
720-744-9700

Expertly Managed by
Furer Development & Management